

PROGETTO DI RIQUALIFICAZIONE EDILIZIA RESIDENZIALE PUBBLICA

DEMOLIZIONE E RICOSTRUZIONE DI EDIFICIO

SITO IN VIA PONTE ROMANO, 28 - FAENZA (RA)

REALIZZAZIONE DI 6 ALLOGGI DI EDILIZIA RESIDENZIALE PUBBLICA

PROGETTO DEFINITIVO/ESECUTIVO

File name: _____ Disegnato: _____ Scala grafica: 1:301/20

Travi piano rialzato "piano 1"

Travi vano scala

Ente appaltatore	Ag. 06/016
------------------	------------

S.11

PRESCRIZIONE MATERIALI

CALCESTRUZZO

Classe di resistenza C22 (concrete UNIEN 206) con: f_{yk} = 23,0 N/mm² - f_{td} = 2,30 N/mm² - f_{ctd} = 2,30 N/mm² (Ritardato 30-13)

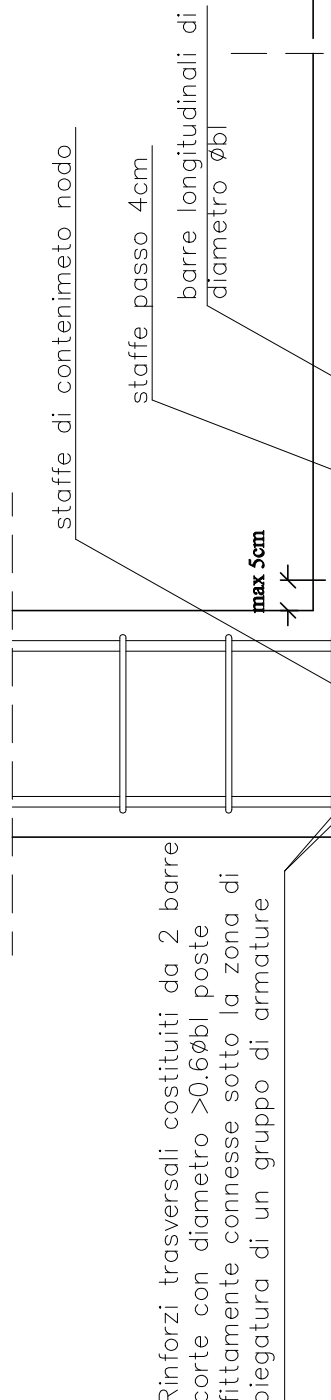
ARMATURA PER CEMENTO ARMATO

f_{yk} = 500 N/mm² - f_{td} = 50,0 N/mm² - f_{ctd} = 50,0 N/mm² (Ritardato 30-13)

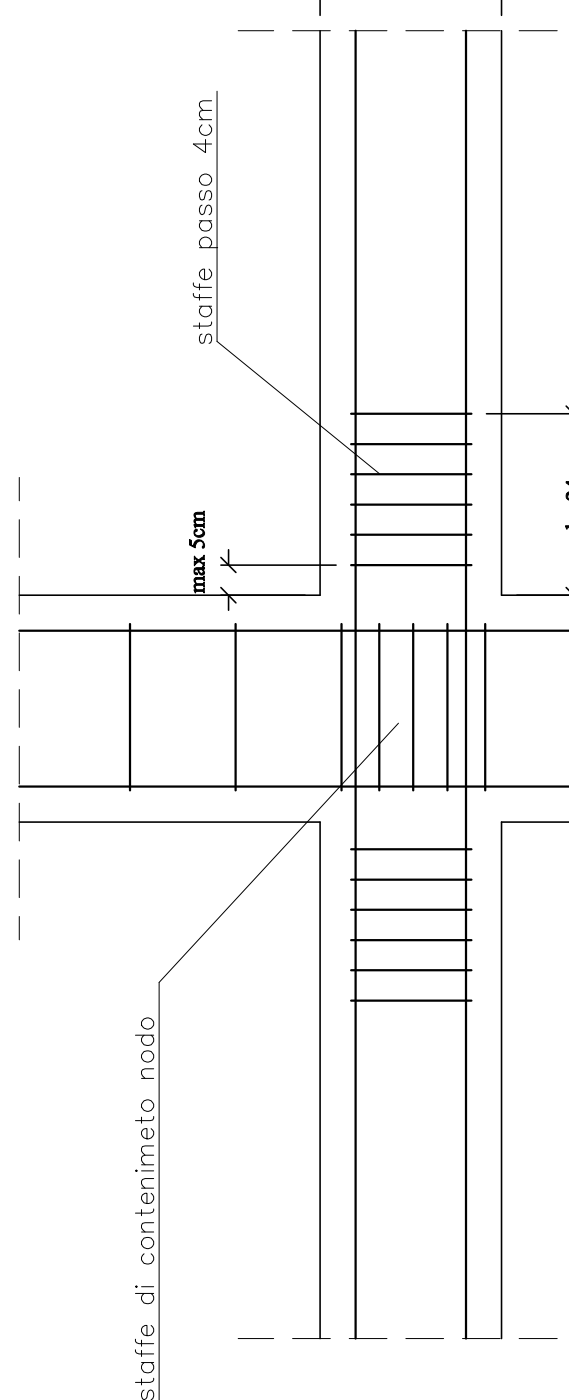
STRUTTURE IN ELEVAZIONE:

Mix A/C=3/5
M₂₀ - f_{yk} = 200 N/mm² - f_{td} = 20,0 N/mm² - f_{ctd} = 20,0 N/mm²
Densità nominale di cemento=300 Kg/m³
Slump 90 - max. granulometria 20 mm.

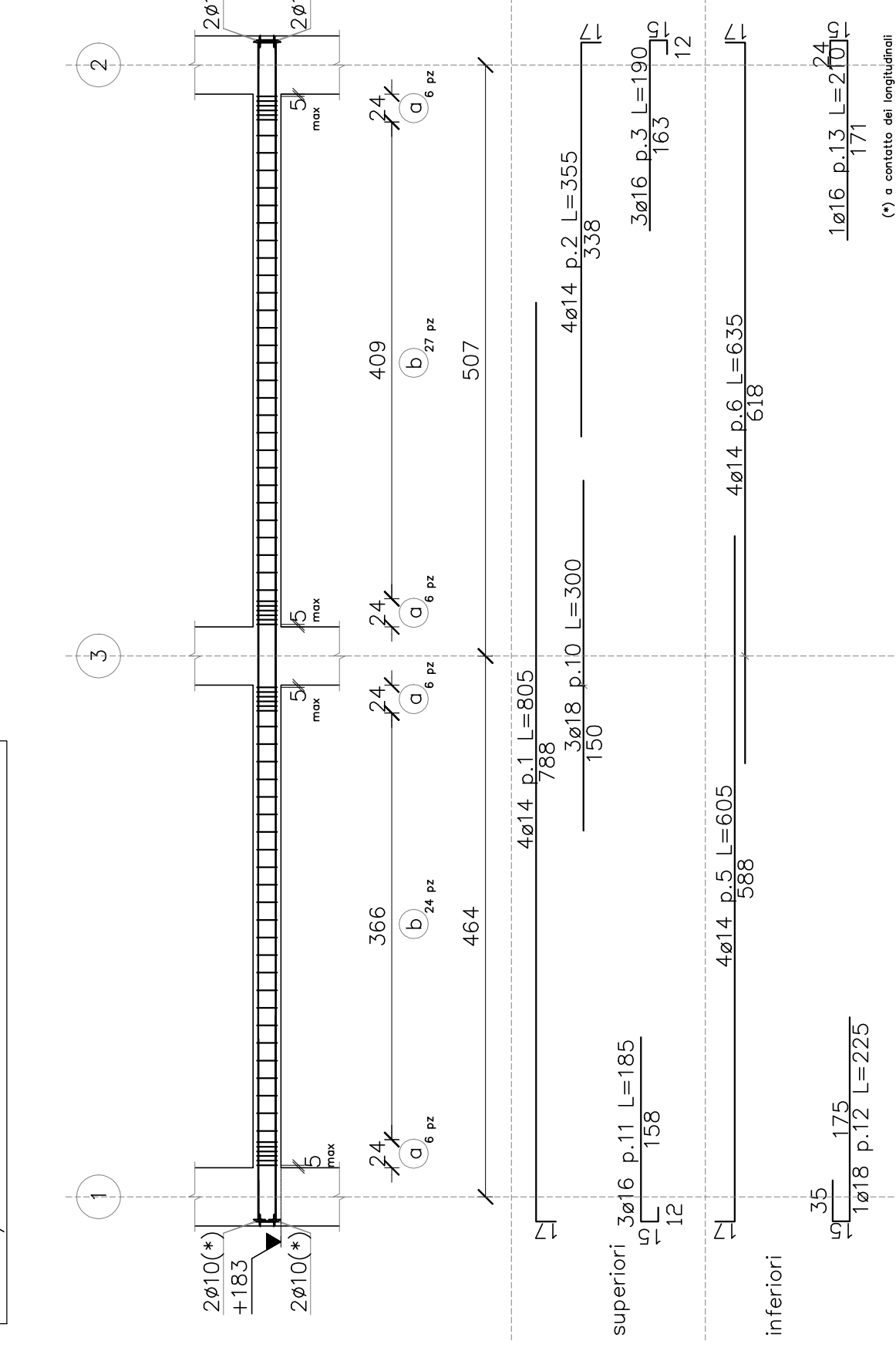
ARMATURA NODO DI ESTREMITA



ARMATURA TRASVERSALE ZONA CRITICA

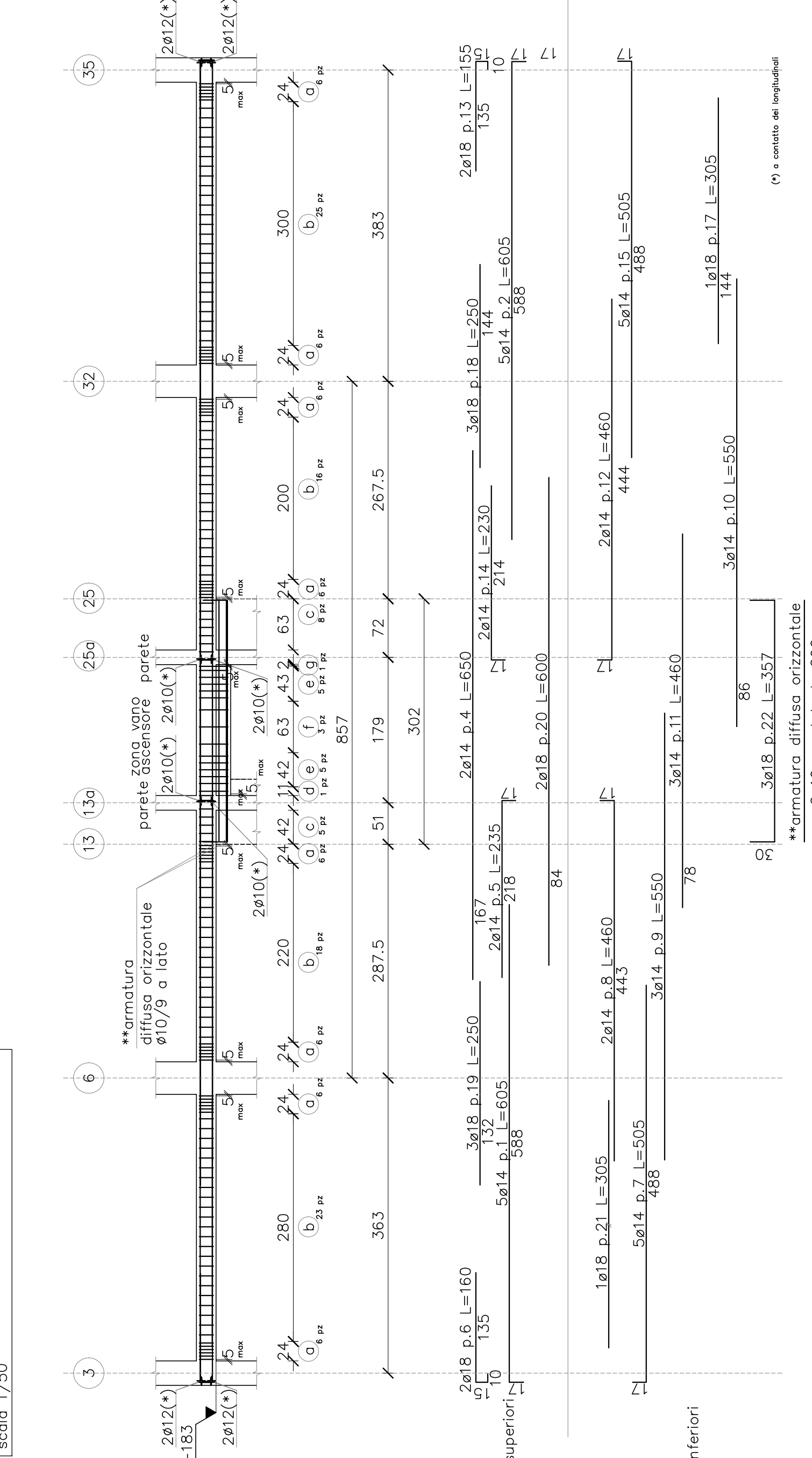


Trave a "Piano 1" 1-2



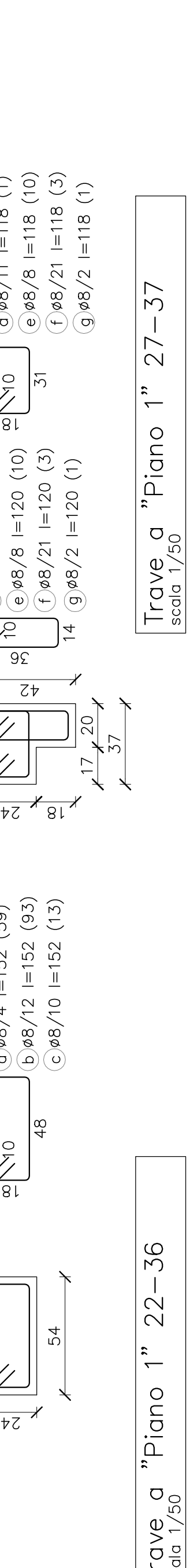
Sezione scala 1/20

Trave a "Piano 1" 3-35

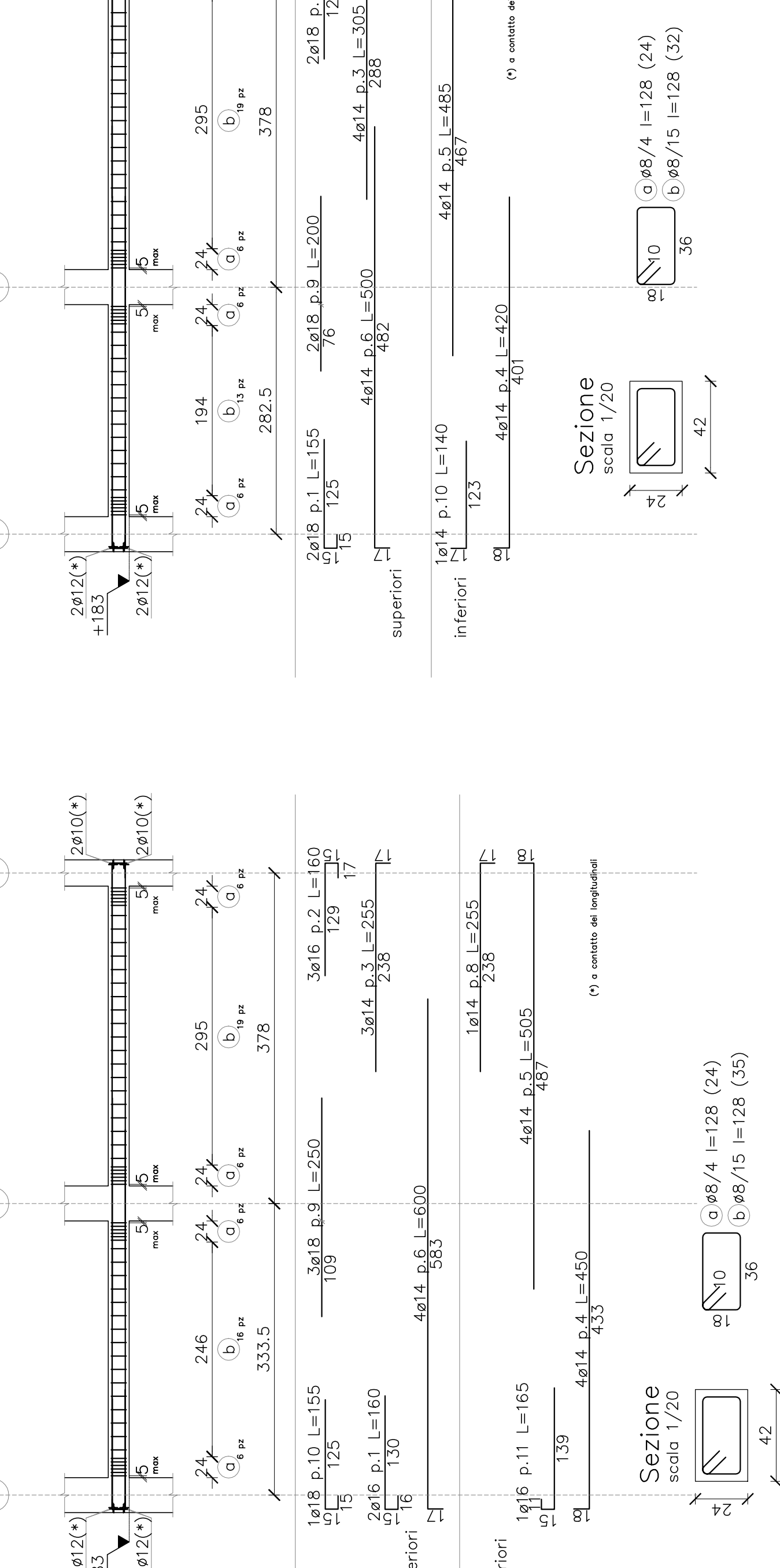


Sezione 3-13 ; 24-35

Trave a "Piano 1" 22-36

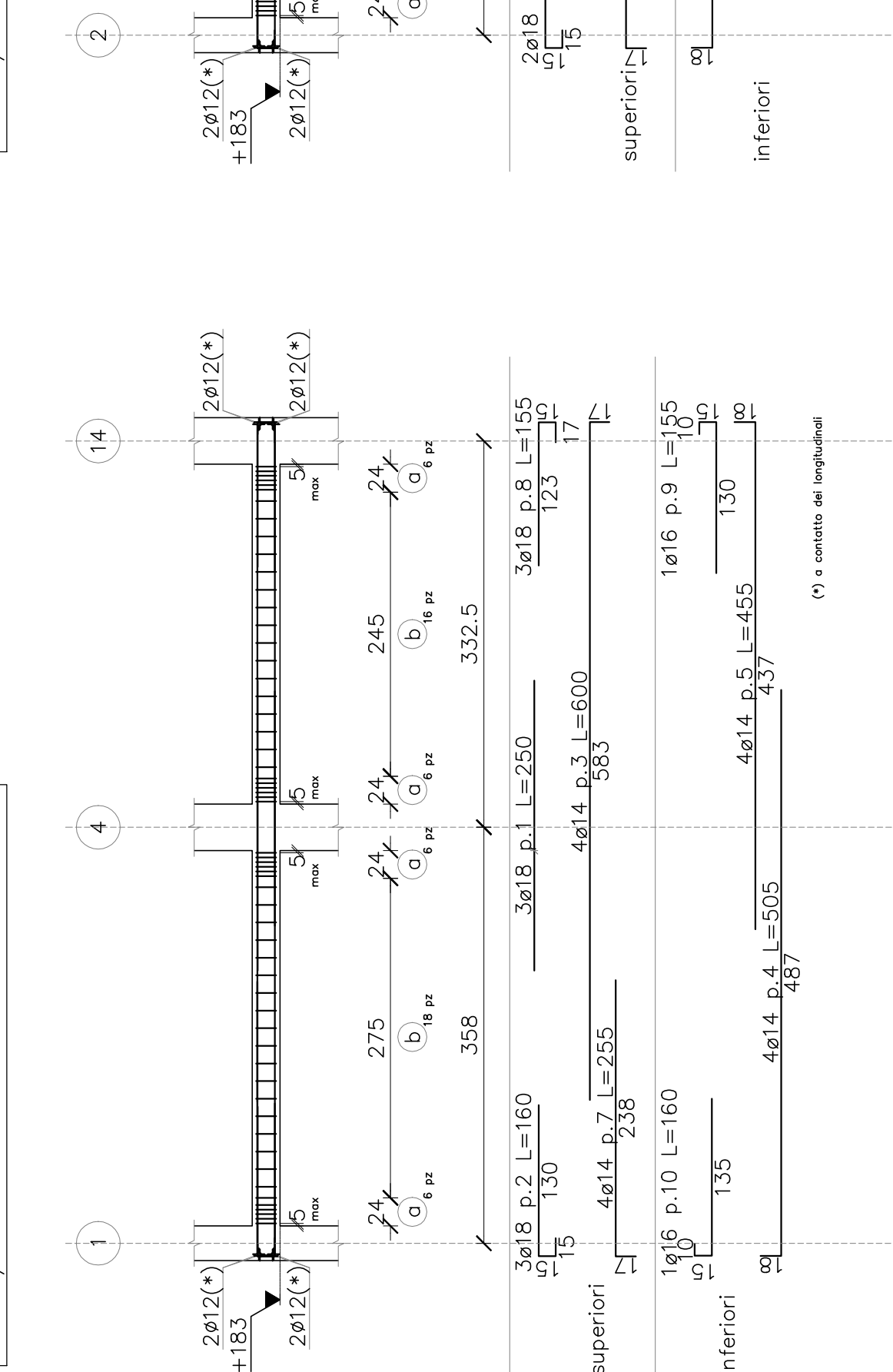


Trave a "Piano 1" 27-37



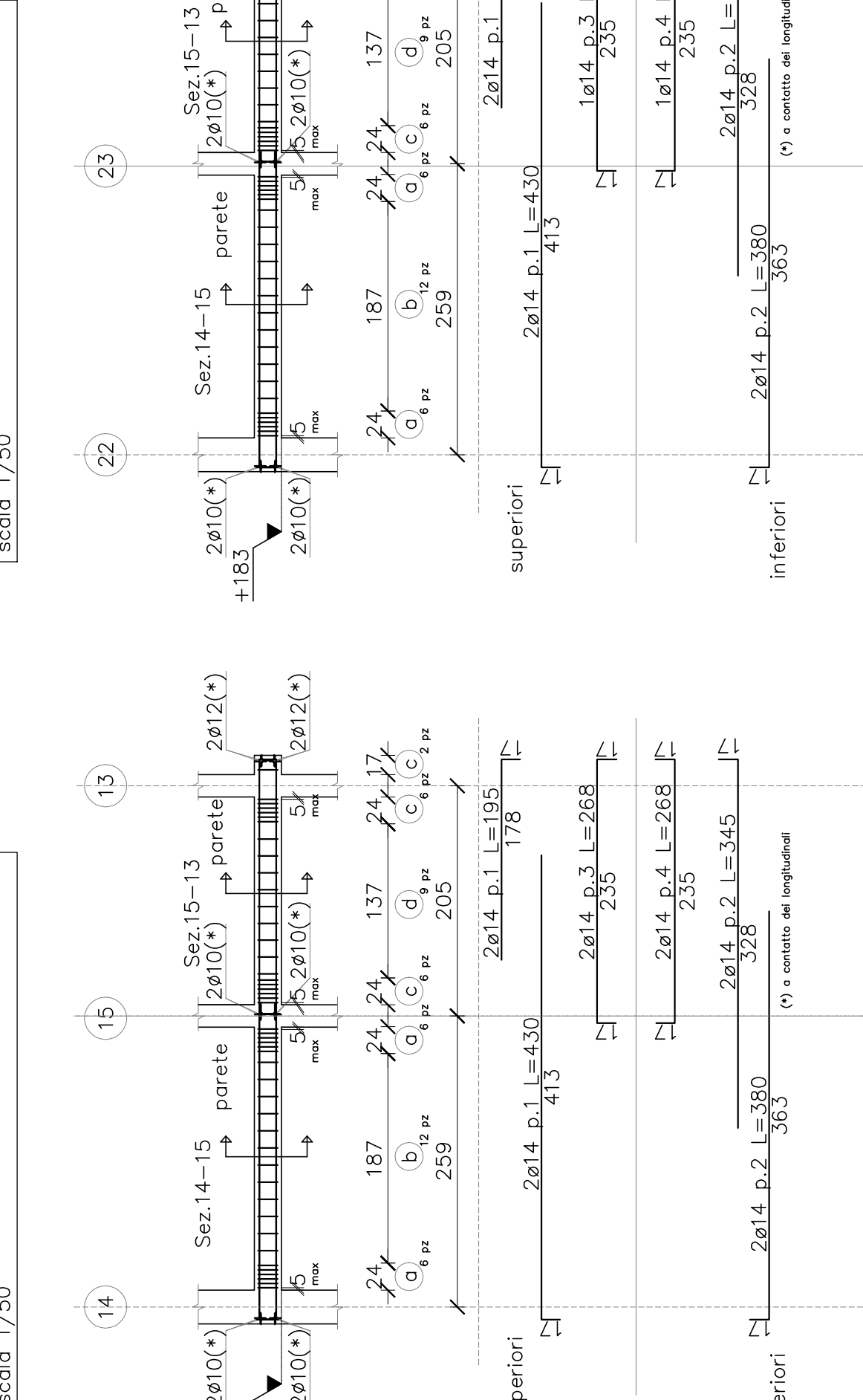
Sezione scala 1/20

Trave a "Piano 1" 1-14



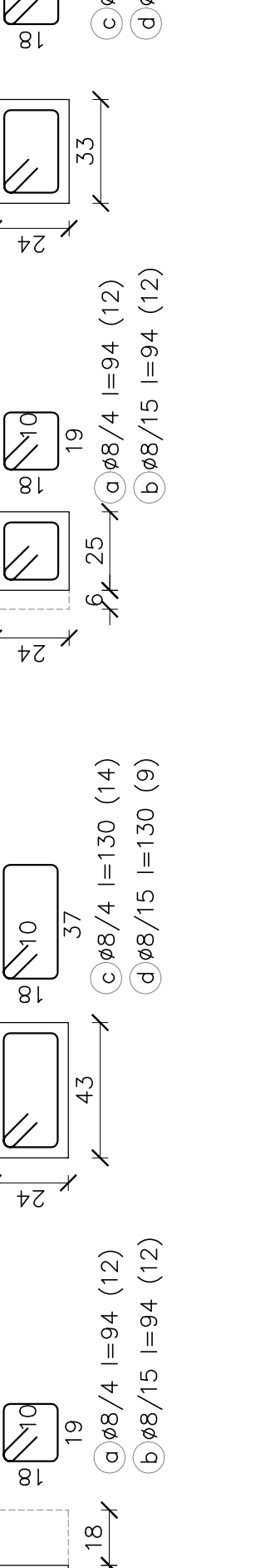
Sezione scala 1/20

Trave a "Piano 1" 14-13

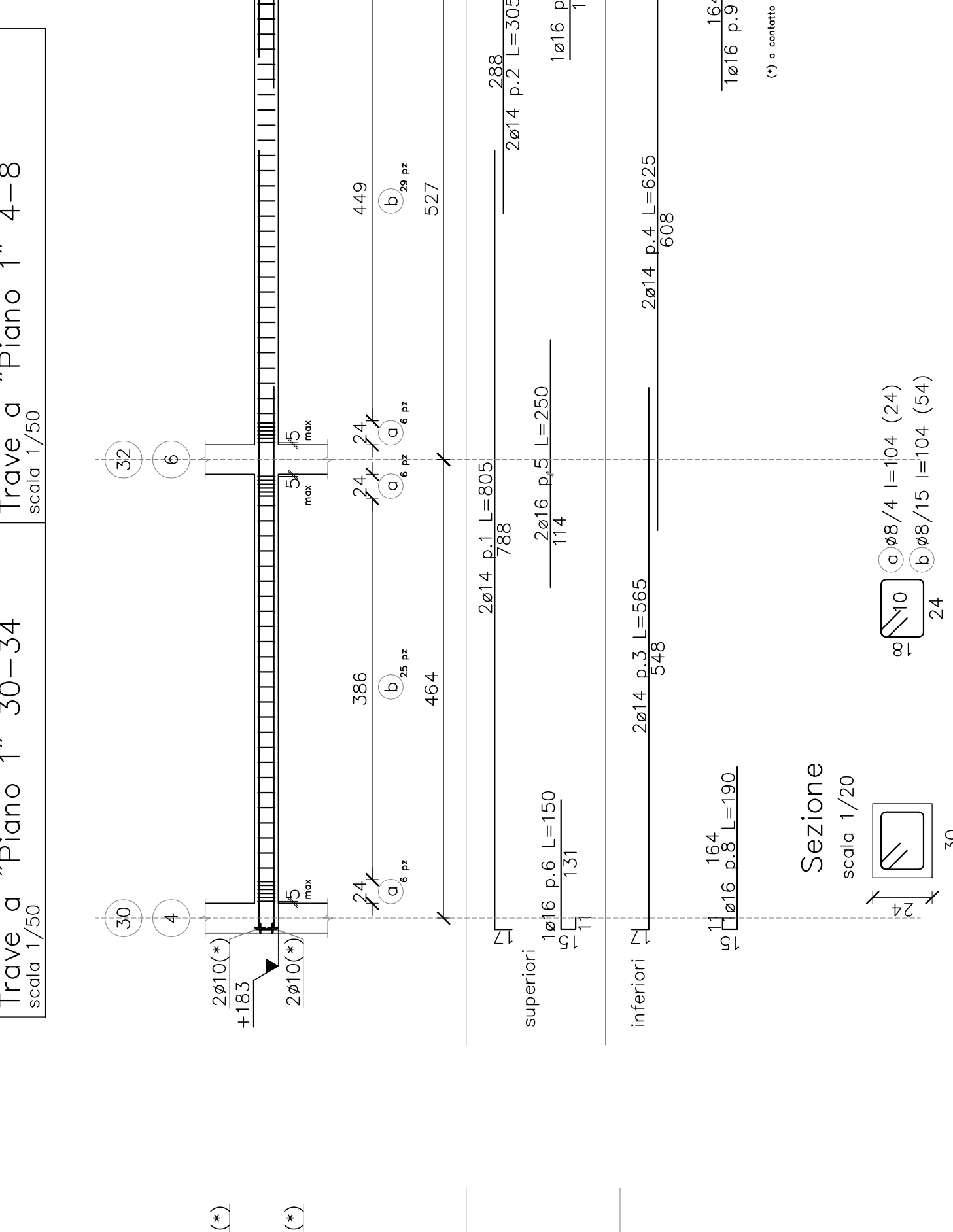


Sezione 14-15

Sezione 15-13

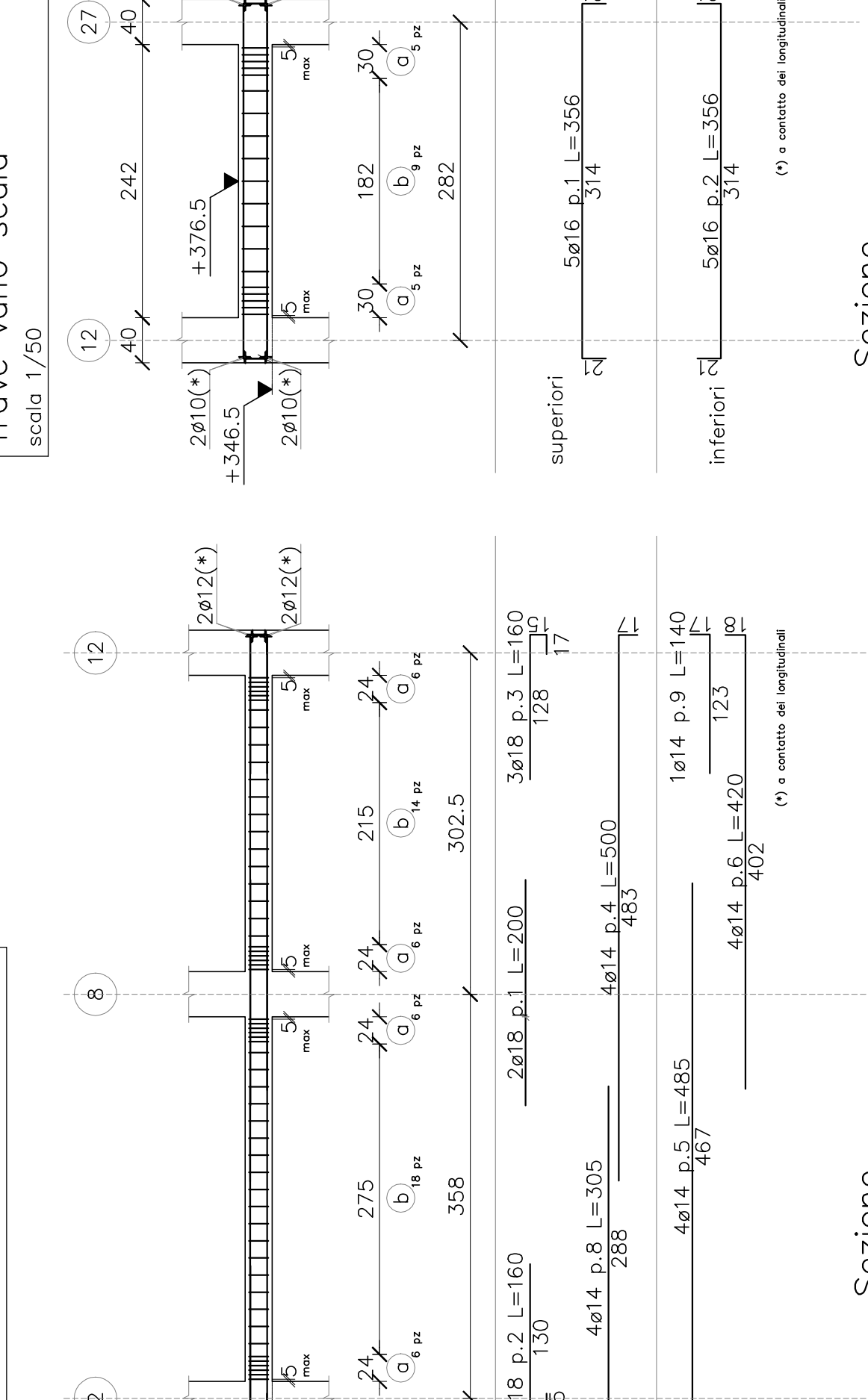


Trave a "Piano 1" 30-34



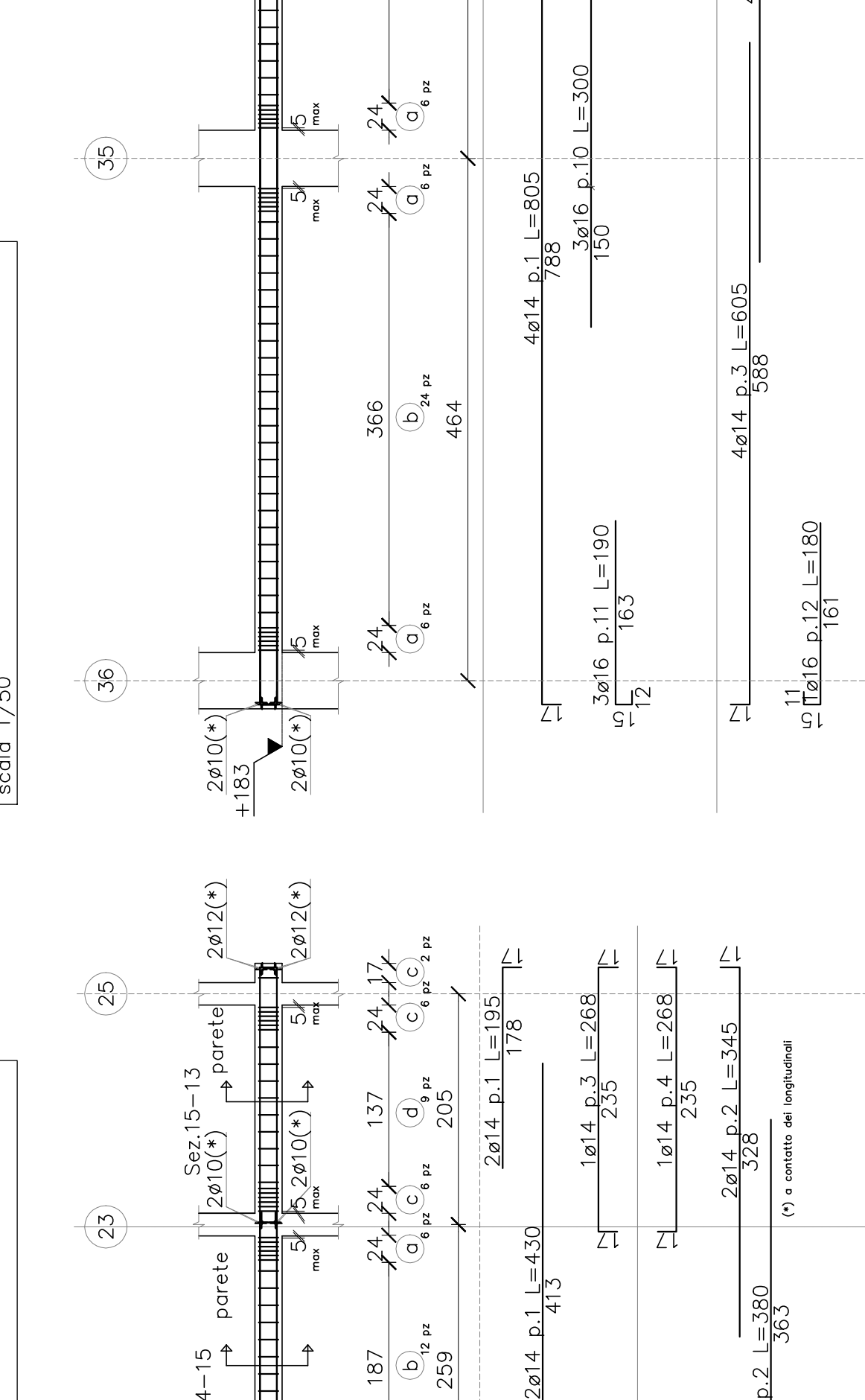
Sezione scala 1/20

Trave a "Piano 1" 2-12



Sezione scala 1/20

Trave a "Piano 1" 22-25

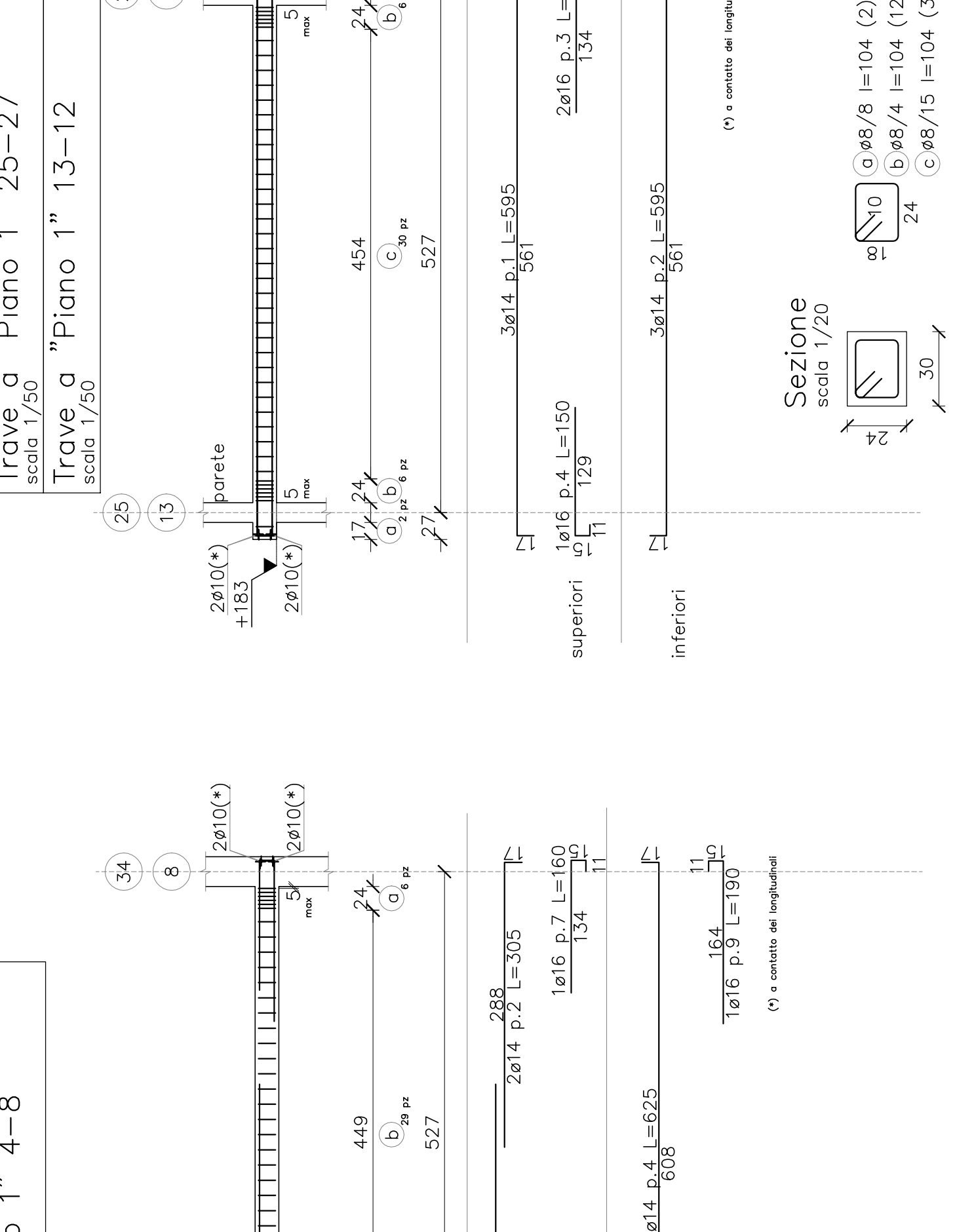


Sezione 22-23

Sezione 23-25

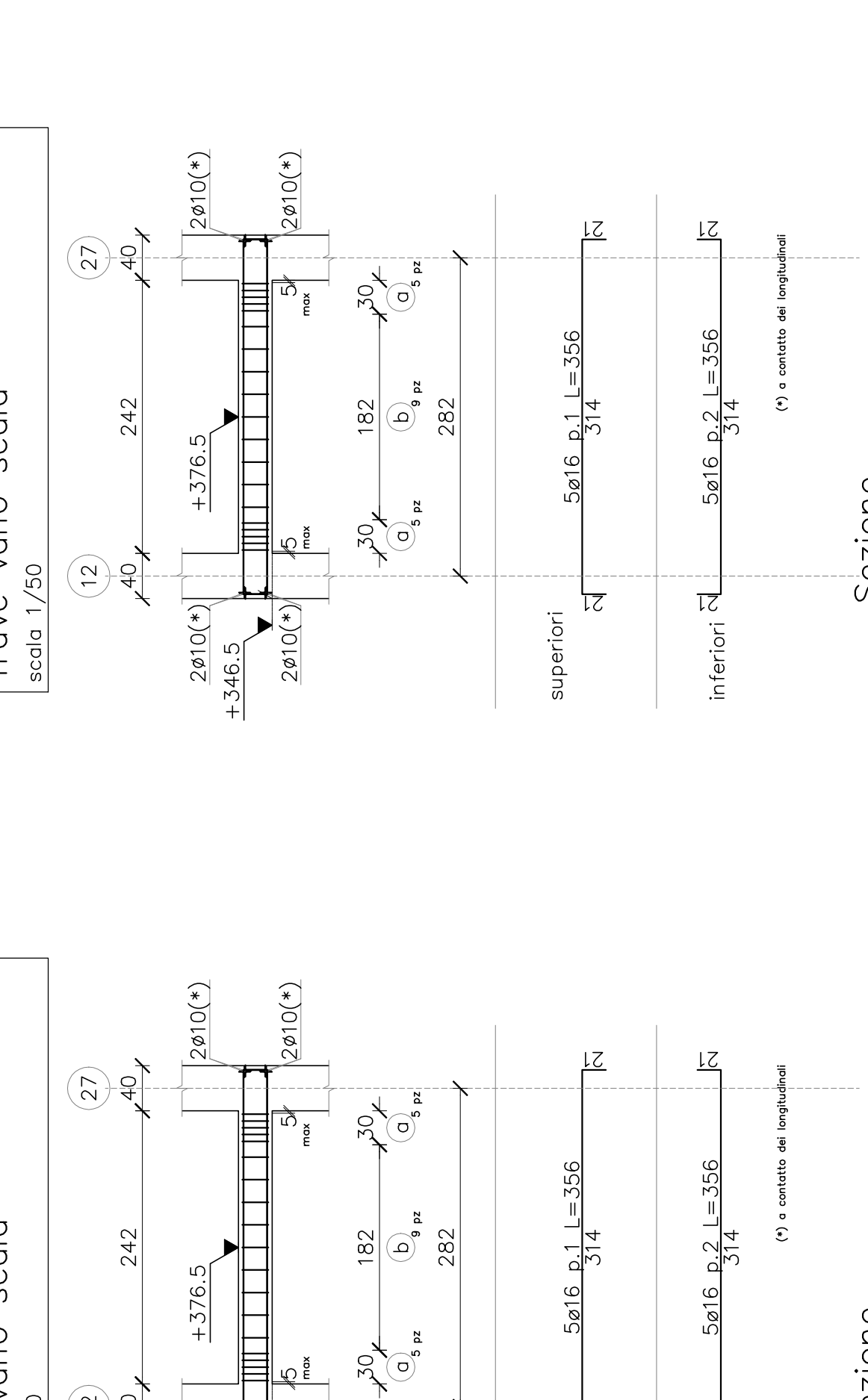


Trave a "Piano 1" 4-8



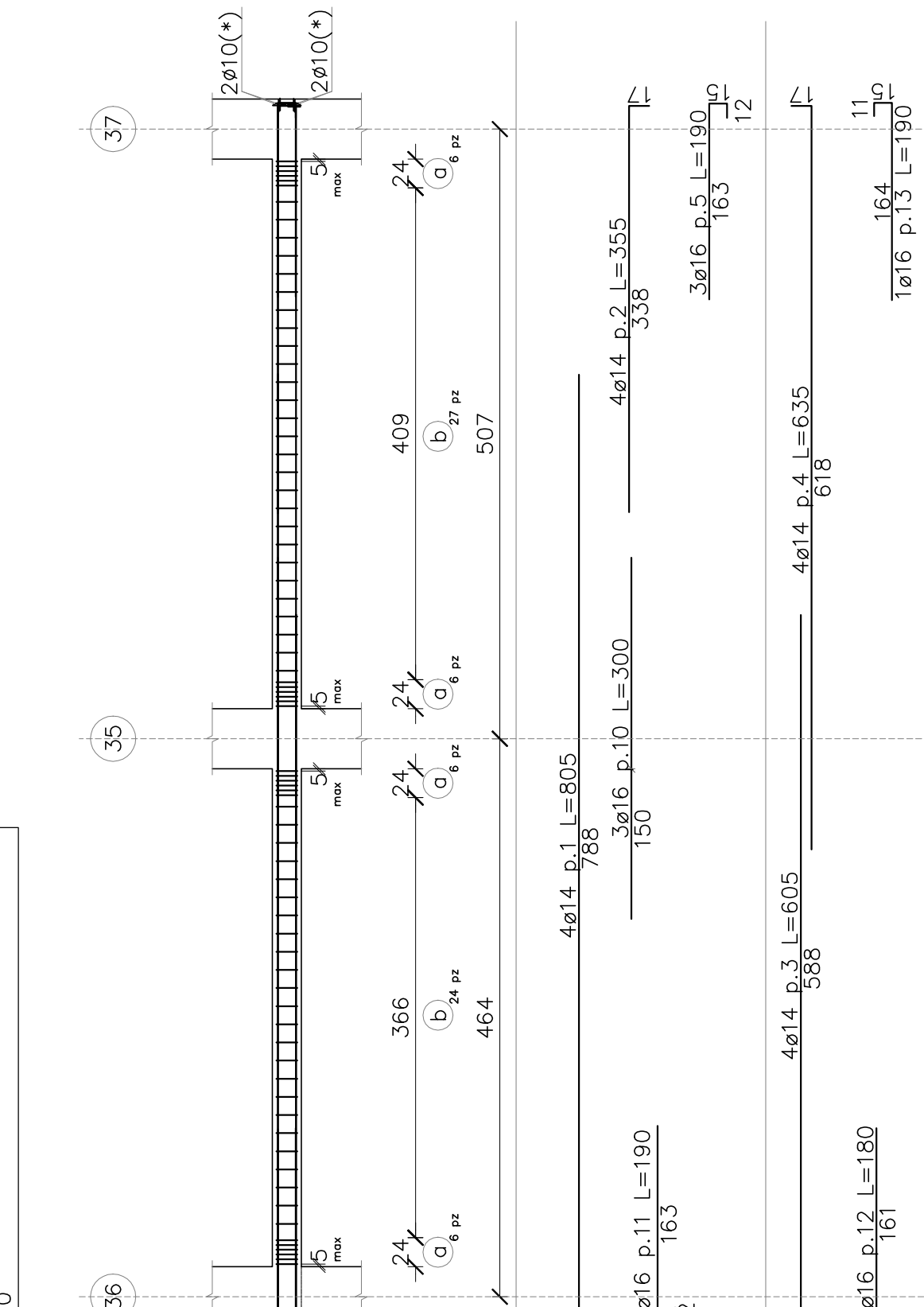
Sezione scala 1/20

Trave a quota "376.5" 12-27



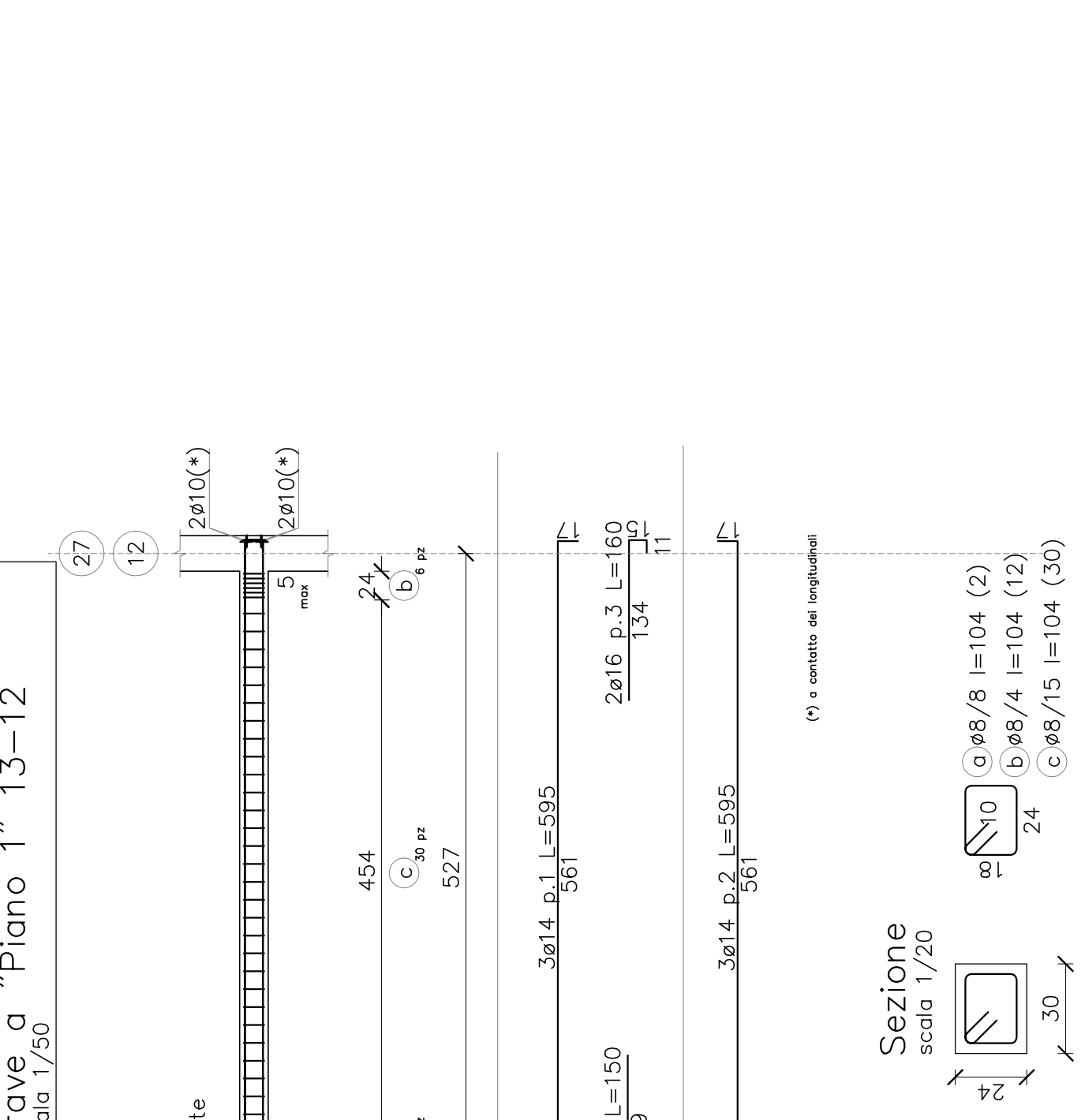
Sezione scala 1/20

Trave a "Piano 1" 36-37



Sezione scala 1/20

Trave a "Piano 1" 25-27



Sezione scala 1/20